



DPx5++

ORGAN NEEDLES

DPx5++ sizes #7/55, #8/60, #9/65, #10/70, #11/75, #12/80

- NEW STANDARD -

OPTIMAL PERFORMANCE

* PRODUCTIVITY * SAFETY * USEABILITY



TOUGH & DELICATE

Zigzag Stitching / Programmed Sewing / Double Needle / Lockstitch / Buttonhole / Bartacking



Diamond Needle Corp

60 Commerce Rd. Carlstadt, NJ 07072
Phone: (201)507-1771 toll-free (800)221-5818
FAX: (201)507-1715 toll-free (800)833-3363
Email: sales@diamondneedle.com

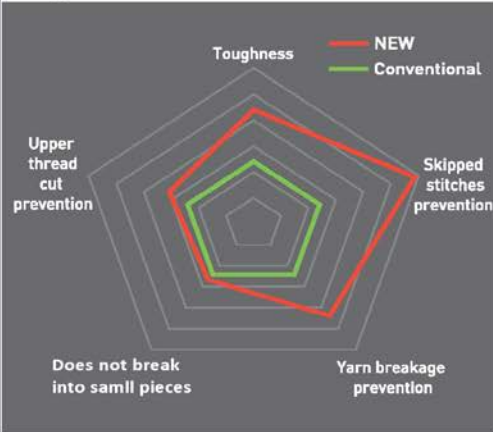




- NEW STANDARD -

OPTIMAL PERFORMANCE * PRODUCTIVITY * SAFETY * USEABILITY

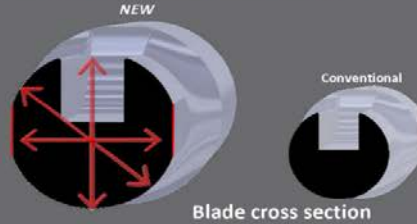
Improvement of Multifunctional Balance



New TD blade

- Optimized diagonal distance
- Perfect strength balance
- Fabric-friendly shape
- More Rigid, Less Deflection

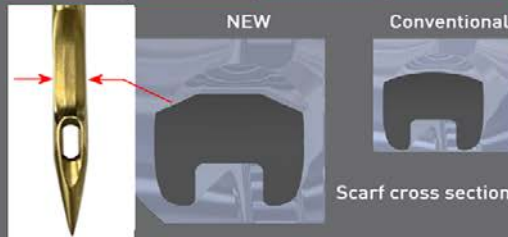
Yarn breakage | Skipped stitches | Needle breakage | Upper thread cut



New TD Scarf

- Less contact against hook
- 2-Scarf design

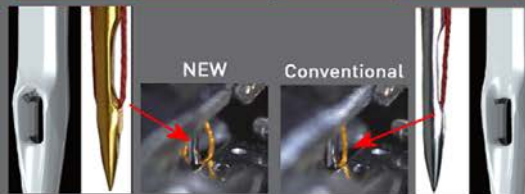
Yarn breakage | Skipped stitches | Needle breakage | Upper thread cut



Cliff Scarf

- Stable loop formation prevents

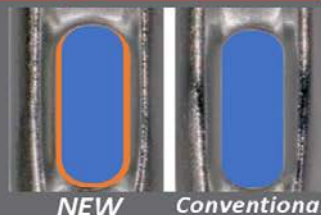
Yarn breakage | Skipped stitches | Needle breakage | Upper thread cut



Large Eye

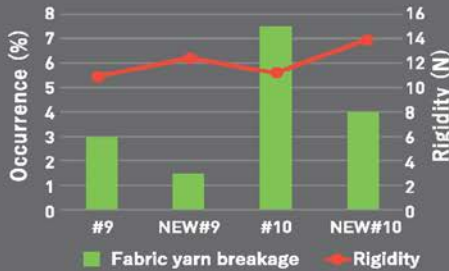
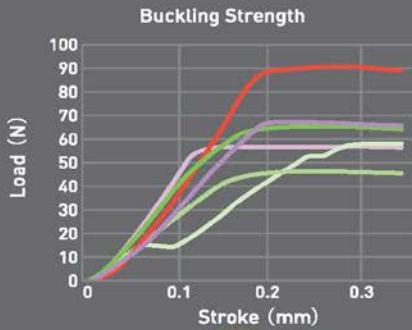
- One size bigger needle eye
- Smooth needle eye surface

Yarn breakage | Skipped stitches | Needle breakage | Upper thread cut

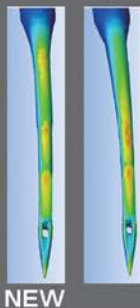


TOUGH & DELICATE TECHNOLOGY Bonus Effect

- Smaller size but strong



- Stress dispersion against breakage



Stress concentration in yellow

